

How to choose your switches

MELJAC ■

the guide



What material?

For an elegant and timeless look, choose 3mm thick solid brass. There are more than 20 different colours and finishes to choose from (colour chart available).

High quality material:
MELJAC's signature!

Which finish to choose on the brass?

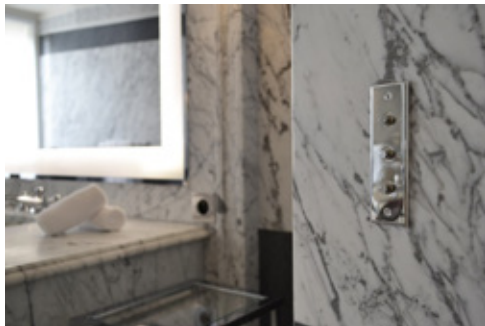
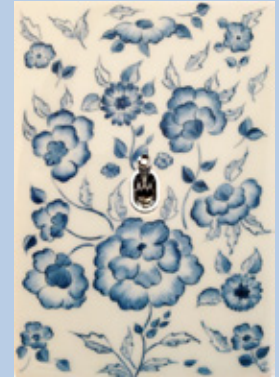
Switches are usually harmonised with the colours of the floor or walls, door handles, light or window fixtures.

But we are seeing more and more combinations of styles that create an original decorative scheme.

Delicacy and sensitivity...

The porcelain LIMOGES collection is the ultimate in refinement. The glazed material is glossy, while the biscuit finish is matte and more discreet.

For a touch of exclusivity, personalise your switch with the motifs of your choice, hand painted by an artist.



Bathroom, kitchen

Depending on the plumbing fixtures, Chromé Vif, Nickel Brilliant or Nickel Brossé are often very popular.

Living rooms

If you have a contemporary style interior, then choose a cool shade such as Nickel Brossé, always a safe bet!

For a decor that includes more wood, prefer warm colours. Bronze Medaille Clair, for example, will match very well. If you want to keep the brass colour, the Champagne finish highlights the original shade of the material.



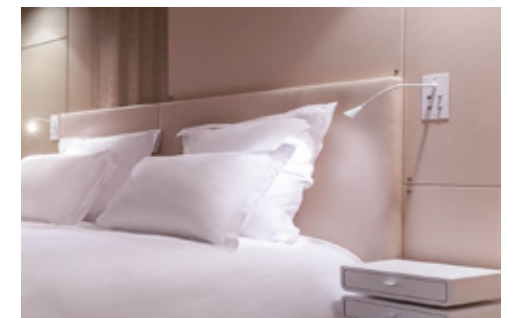
Want some colour?

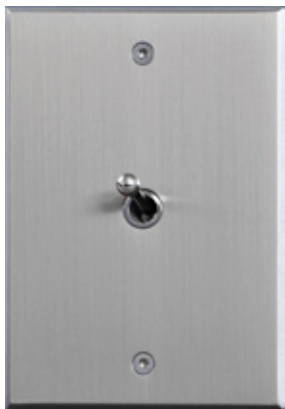
The tempered glass PIERROT collection, will brighten up your bathroom or make your children's room their own unique world!

Bright or pastel, there is a wide choice.

If you are a fan of brass, then opt for an Epoxy coating, applied directly to the brass and very resistant to the effects of time.

The RAL colour chart can be consulted in our showrooms and on www.meljac.com.





What shape?

Square, rectangular... If you don't have a preference, you should be aware that an 80 x 115 mm format offers the advantage being able to combine several mechanisms. On the other hand, if you have little space on the wall, opt for a narrow format.

Or you could try something original, like an octagonal, hexagonal or oval plate.

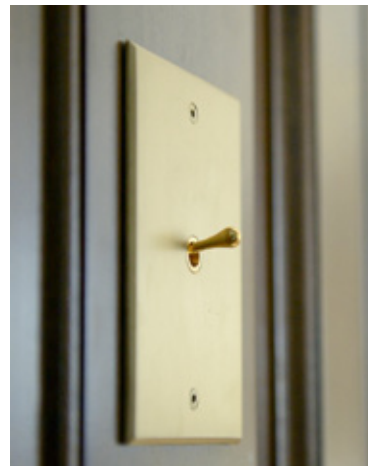


Everything is possible at MELJAC !



Two way lever or push button?

Beyond the technical aspect, it is, above all, an aesthetic choice.



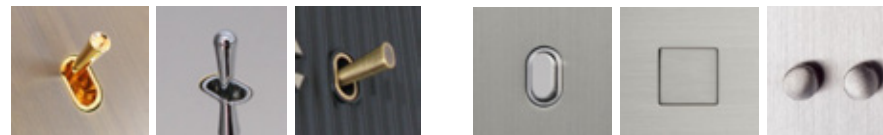
The "water drop" lever is MELJAC's signature design. Its 1930s inspired vintage look has a charm that adapts to any type of decoration, modern or classical.

The two way switch can control a maximum of two lighting points.

With a pushbutton, which is more discreet, you can multiply the number of points controlled. It must be connected to a trip on the switchboard to activate the light or to a dimmer switch to vary the light intensity.

Worth knowing:

To keep the levers harmonised, the pushbutton can be replaced by a **toggle**. Conversely, the **push button with interlock** does not require a relay on the switchboard and can be connected as a two way switch.



MELJAC designs its own mechanisms and is always innovating, with the creation of new models, adapted to its collections.



Refurbishment

It is often possible to adapt MELJAC products on existing flush-mounted boxes, have an electrician identify yours and check their depth (50 mm required). If they are incompatible, customised manufacturing can be explored.

In accordance with the NF-C 15100, our products must be grounded, so you should make sure that this is planned.

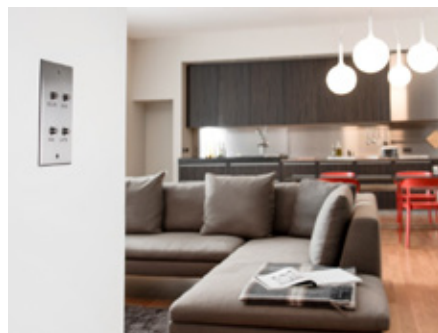
If you are renovating, your electrician can give you a VAT reduction!

Home automation

Are you carrying out a very low voltage electrical installation?

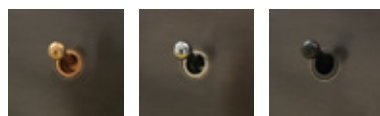
The intelligent house is possible!

MELJAC allows you to control your system with push buttons or toggle switches.



New look?

By only changing the mechanisms: to modernise the switch on a Dark Bronze Medal plate, simply replace the gold lever or button (standard with warm shades) with chrome, or, for extra elegance, a mechanism in the same colour as the plate!



Gold Chrome Processed



It is also possible to change the decor of your plates thanks to a reprocessing treatment in MELJAC's workshops...

There are more than 20 different finishes (colour chart available).

Options



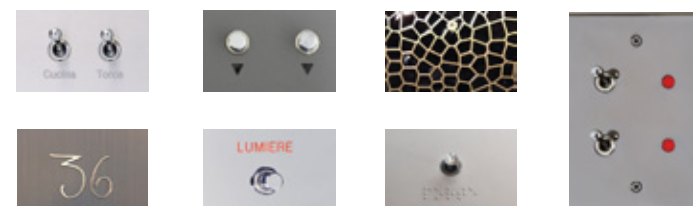
Customise your switches!

You can choose a lamp, one of our existing engraving patterns (pictogram, lettering, etc.) or give us your design.

What for? To identify individual controls (lighting, blinds, volume, etc.) and make them more intuitive to use.

Resin filling allows the engraving to be more visible on some dark finishes.

If you want something more original, MELJAC designs embossed engravings, as well as luminous engravings or even Braille.





www.meljac.com

Head office and showroom Ile de France

3 rue de la Procession 75015 PARIS

Tél. : +33 (0)1 40 61 08 43

Fax : +33 (0)1 40 61 08 46

france@meljac.com

Showroom Rhône-Alpes

5 rue Charles Dullin 69002 LYON

Tél. : +33 (0)4 78 38 37 72

Fax : +33 (0)4 78 38 09 64

lyon@meljac.com

Export department

Tél. : +33 (0)1 47 34 21 42

Fax : +33 (0)1 47 34 21 46

export@meljac.com

To find the retailer closest to you : www.meljac.com