



Wall fitting with one switch

- **Lamp** : flexible 25 cm. Can be fitted directly onto a wooden headboard.
- **Toggle switch** : On/Off function or alternate between two lighting settings.

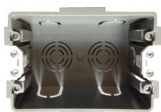
Characteristics

- This product is indoor fitting and must be linked to earth
- Clean with a soft dry cloth and no additional product
- Protection index : IP20 (IP21 on request)

Covering Plate	
Material	brass
Dimensions	80x115x3 mm
Chamfer	yes
Visible screws	yes (supplied)
Mounting plate	no
Screws axis (way of mounting)	vertical
Screws interaxis	88 mm
Type of screws	torx machine screws $\varnothing 3 \times L.25$ mm
Colours	the 25 shades of the color chart

Equipment	
Mechanism types	- 1,4 W LED light with 60° beam - "Drop" switch - canon rond
Power	6A/250V
Connection Cabling	- Automatic switch (by default) : 6A/250V - Screw connection (on request) : 6A/250V - LED supplied by electronic converter 350 mA (précâblée) with rigid cables of section 1,5 mm ² stripped on 13 mm
Colours	- switch : by default, chrome-plated on cold or special finish and golden on warm finish - LED lighting : please contact us - flexible : same finish as the plate

Back box to use



Type	MELJAC mixed back box ready for use in masonry. Please order the kit to adapt into dry partition.
Référence boîtier	CBBOICZ-Z115800199
Référence kit	CBBOICZ-Z0MELKIT99
Dimensions	L.97xI.69xP.50 mm
Entraxe des vis	88 mm

Dimensions

